



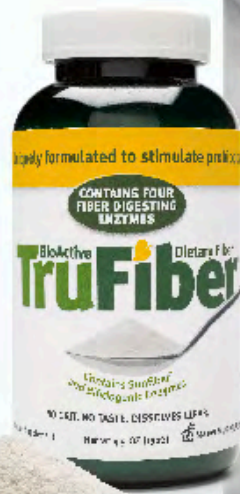
Provider Services of America Food Sensitivity Testing Program (Part II)

PROBIOTIC SUPPLEMENTS

A Revenue Producing Program For Primary Care Physicians

Theralac, Enzalase, TruFiber, TruFlora, and 2+2 are registered Trademarks of Master Supplements, Inc.

Bad things start with poor digestion.



- ✓ **TruFiber** works with both **Therlac** and **Enzalase**
- ✓ Results in both hard and soft stools **normalize**
- ✓ Corrects occasional **irregularity**



- ✓ **Enzalase**® enhances digestion, absorption and elimination
- ✓ **High lipase:** 6,000 FIP/capsule insures rapid fat digestion
- ✓ **3 fiber digesting enzymes** release prebiotics and stimulate probiotics
- ✓ **High Alpha-Galactosidase** and **Lactase** reduce gas



- ✓ **Therlac**® rapidly restores normal elimination and assures predictable bowel movements
- ✓ Effectively colonizes intestinal surfaces..



Fastest-acting Probiotic

Strength • Delivery • Stimulation



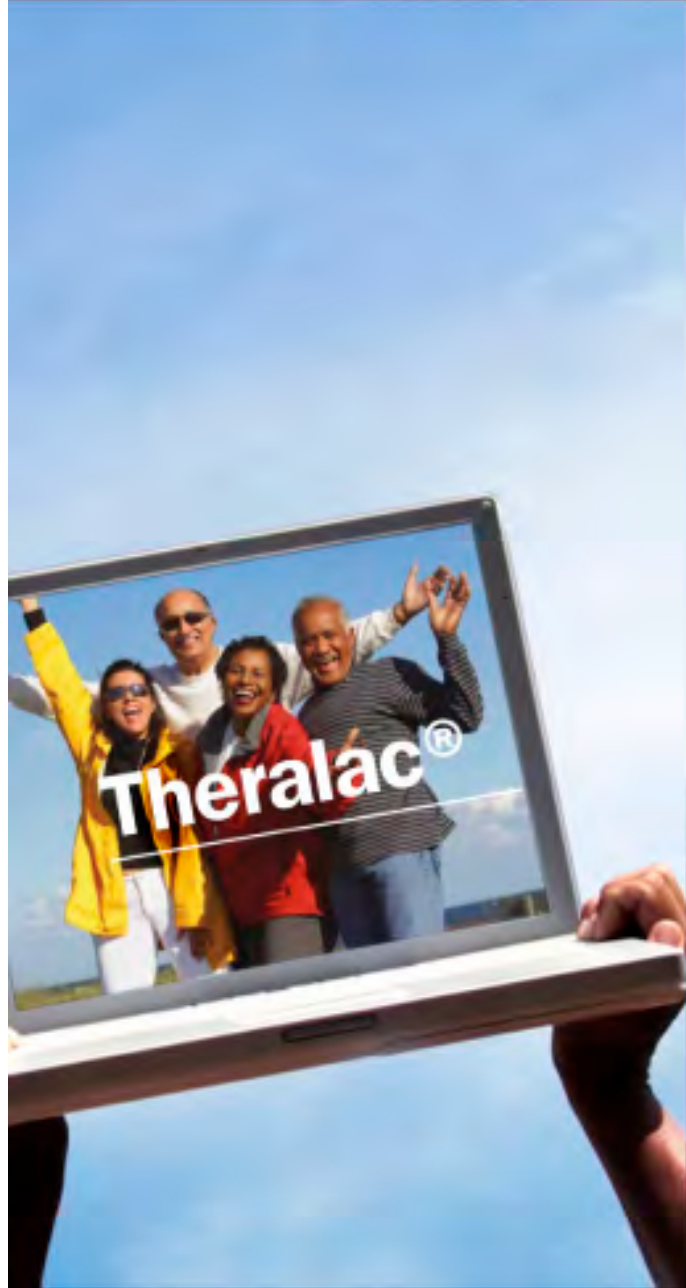
STRENGTH

Strong probiotics delivered here.

- ✓ **30+ billion** guaranteed at expiration
- ✓ **Third Party independent tests online by lot number**
- ✓ **Individual strains guaranteed**
- ✓ **TIP packaging**
- ✓ **Kept frozen until shipped**



STRENGTH



Your internal probiotic culture is vitaly important

Probiotic = Regularity

- ✓ A strong, effective I.P.C. may control both diarrhea and constipation; and may help restore regularity

STRENGTH

Report Date: 5/5/2009
Lab: Minnesota Valley Testing Laboratories, Inc.
Report Name: Microbial Purity
Lot Number: 4229A
Lab Number: 09-M31827

Description	Result	Unit of Measure
Escherichia coli USP	Negative	
Weight for Escherichia coli USP	10	grams
Staph Coagulase Pos. Confirmation	Negative	per 10 grams
Mold Count	< 10	CFU/gram
Yeast Count	< 10	CFU/gram
Lactic Acid Bacteria	82,000,000,000	CFU/gram
Lactic Acid Bacteria Duplicate	92,000,000,000	CFU/gram
Lactic Acid Bacteria Triplicate	99,000,000,000	CFU/gram
Weight for Salmonella BAM Method	25	grams
Salmonella, BAM Method	Negative	

Report Date: 5/5/2009
Lab: Minnesota Valley Testing Laboratories, Inc.
Report Name: Activity Analysis - Reported as % Lactic Acid
Lot Number: 4229A
Lab Number: 09-M31827

Description	Result	Unit of Measure
Time 0 hours pH = 6.33	% Lactic acid = 0.07	
Time 4 hours pH = 4.78	% Lactic acid = 0.58	
Time 6 hours pH = 4.36	% Lactic acid = 0.92	
Time 8 hours pH = 4.24	% Lactic acid = 1.26	
Time 12 hours pH = 3.94	% Lactic acid = 1.48	
Average Count Per Capsule	41,000,000,000	CFU/Capsule
Median Count Per Capsule	41,000,000,000	CFU/Capsule

Third Party independent testing published online by lot number

✓ Theralac[®] is tested for strength, purity and activity.

DELIVERY



**After 30 minutes
in small intestine**



Acid-Proof Delivery

- ← This is the capsule just placed in artificial stomach acid.
- ← The purple starts in about 3 minutes. The purple color is **grape skin extract** added for its antioxidizing capabilities.
- ← Here the v-cap is mostly dissolved and the alginic acid shell has formed. Here the inside is dry and buffered to a pH above 4.0.
- ← Alginate gel for **deep release**.

3

Dosage Plans

To create and maintain an implant of probiotics

Standard Program

900 Billion CFU* over **10 weeks**

Best starting program for most adults.

1 daily for 2 weeks followed by 2 per week thereafter.
30 capsules lasts 10 weeks.

Intensive Program

900 Billion CFU* over **30 days**

For traveling or for intestinal distress.

1 daily for 30 days. 30 capsules lasts 30 days.
(2-3/day may be advantageous)

Health Maintenance

900 Billion CFU* over **15 weeks**

Good for young adults, athletes.

2 weekly for 15 weeks. 30 capsules lasts 15 weeks.



Theralac[®] can be taken with antibiotics

Take the antibiotic at the prescribed time followed by Theralac[®] two to three hours later. Continue taking Theralac[®] daily for at least two weeks after finishing the antibiotics.





Probiotic Benefits

Some of the many health benefits accredited to dietary consumption of probiotic cultures include:

- ✓ Enhanced gut function and stability
- ✓ Immune system up-regulation
- ✓ Alleviated lactose intolerance
- ✓ Improved digestion and nutrient absorption
- ✓ Reduced blood cholesterol
- ✓ Reduced allergy risk

Packaging and Shelf Life



- ✓ Probiotics are living products that require refrigeration.
- ✓ Oxygen scavenger inside capsule.

- ✓ Extremely low water content.
- ✓ **Totally Inert Packaging: (TIP)**

Theralac capsules are packaged in double-sealed, amber glass bottles containing both and absorption packets with a Nitrogen Flush.

They can be held at room temperature for up to one month (while traveling) but should be kept refrigerated beyond that.

Safe shipping at ambient temperatures is assured with T.I.P.

Children's
Theralac[®]
Acid-Proof Granular Probiotic





Fastest-acting, probiotic for children

- ✓ For those who have difficulty swallowing capsules
- ✓ 25 billion CFU guaranteed at time of expiration
- ✓ Patented Stomach Acid Protection
- ✓ Designed to be folded into soft food



For the young and older alike

- ✓ Taste-free powder you fold into applesauce
- ✓ Formulated at double strength and confirmed by independent lab (see *Theralac.com*)
- ✓ Unique prebiotic stimulation
- ✓ Totally Inert Packaging
- ✓ Superior Well-Researched Strains
- ✓ Three Dose programs



Directions for Children's Theralac[®]

- ✓ Taste-free powder you fold into apple sauce.
- ✓ Fold (do NOT stir) $\frac{1}{4}$ level teaspoon into applesauce, or any soft food.
- ✓ Wait 1 minute to allow the protective gel to form; then serve.

TruFlora[®]
Probiotic PLUS Enzymes

A new concept in
probiotics





Bio-Cleansing Probiotic

- ✓ 32 capsules lasts 16 weeks (2/week).
- ✓ Can be held at room temperature 4 months.
- ✓ Fast-acting; restores regularity FAST!

BIO-CLEANSING:

Enzymes work with probiotics:

Our TruFlora® Product



- ✓ Fiber-digesting enzymes in Enzalase and TruFiber maximize dietary fiber. The high lipase content in Enzalase helps digest fats.
- ✓ TruFlora is a powerful probiotic containing three lactic acid producing probiotic bacteria and two betaglucan digesting enzymes that work together to help control yeast and other intestinal microorganisms.

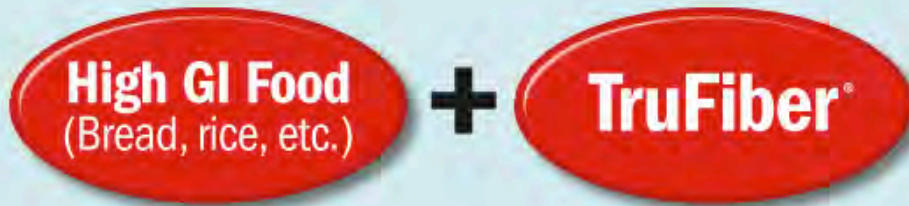


Improve regularity

Formulated to stimulate probiotics



Influence of TruFiber[®] on Glycemic Index (GI)

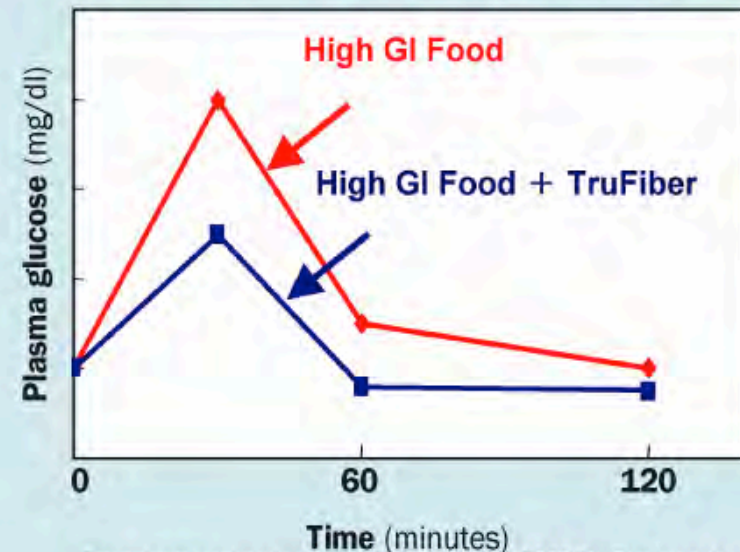


▼
Inhibition of postprandial blood glucose increase

▼
Reduction of Insulin Secretion
(prevention of obesity)

▼
Regulation of blood sugar and obesity

Estimated change of blood glucose level



Research was conducted on SunFiber; TruFiber contains 93.5% SunFiber by weight.



BIO-CLEANSING:

Enzymes work with prebiotics: Our 2+2 Program

- ✓ **These products in combination create a gentle Colon Cleanse by breaking down the fat-fiber complex that accumulates in the colon.**
- ✓ **The prebiotics and enzymes in TruFiber work synergistically for effective Bio-cleansing.**

Enzalase[®]

Probiotic Compatible Enzymes

Advanced
Multi-Enzyme with
high lipase and
acid-proof delivery.

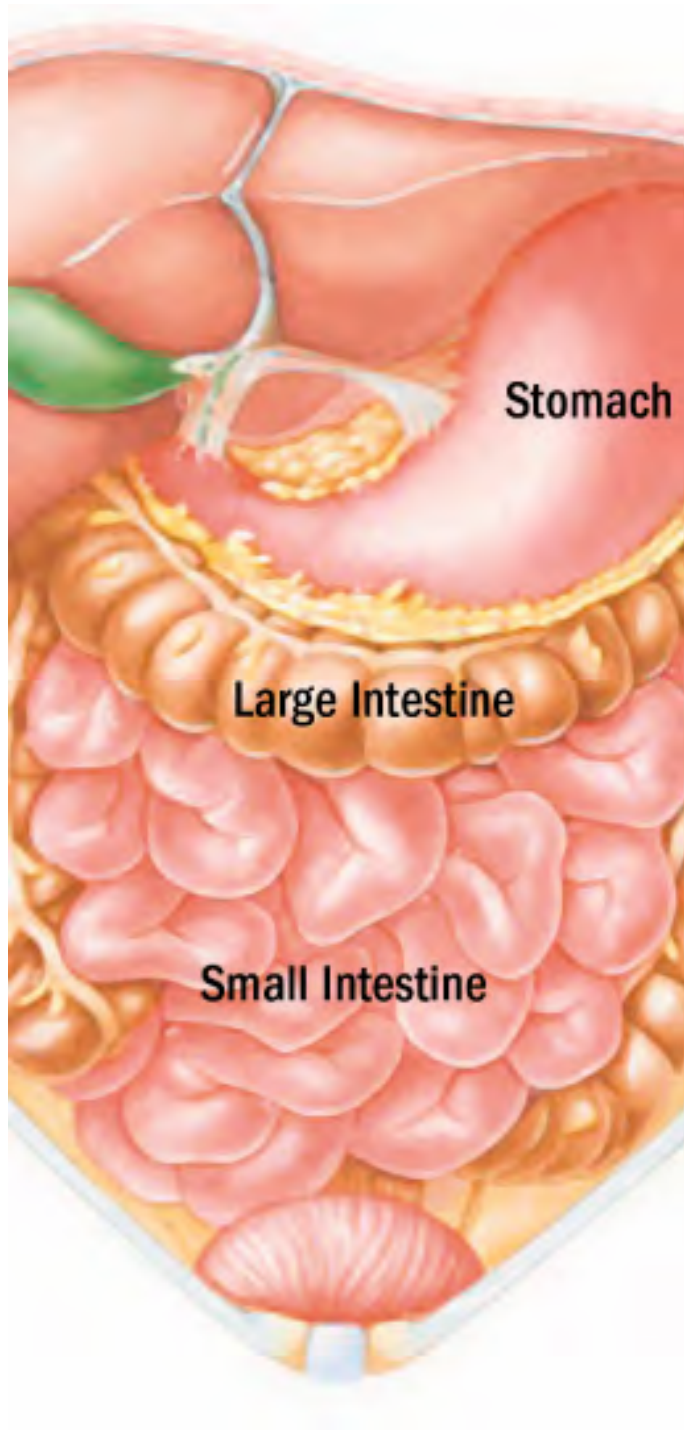




Acid-Proof Delivery

Sodium alginate forms an inner buffered gel that stays together in stomach acid, but dissolves in the small intestine.

This assures viable delivery of enzymes.



Enzalase may control and reduce intestinal gas.

Important gas-reducing enzymes in Enzalase.

ENZYME ACTIVITY UNITS PER CAPSULE

Alph-galactosidase:	165 GalU
Lactase:	1000 ALU
Invertase (sucrase):	400 SU



Helps release viable nutrients from whole food

Raw fruits and vegetables contain insoluble fiber (cellulose and hemicellulose) that blocks the absorption of key nutrients such as vitamins and minerals.

Enzymes that digest fiber in whole foods found in Enzalase[®]:

Cellulase	3,000 CU
Hemicellulase	6,400 HCU
Pectinase	7,500 AJDU (25 Endo-PG U/gm)



ENZALASE DOSE PROGRAMS Dose Program 1

Improves digestion of:

- ✓ Protein
- ✓ Fat
- ✓ Carbohydrate
- ✓ Fiber

THREE
MEGA-POTENCY
PROGRAMS FOR
INTESTINAL
HEALTH

Take one capsule with the largest meal of the day. One a day is usually enough.

One bottle of 50 capsules lasts for 50 days.

NOTE: Due to Enzalase's high potency and acid-proof delivery, one capsule per day is usually enough; up to 3 capsules can be taken per day.



ENZALASE DOSE PROGRAMS Dose Program 2

- ✓ For Probiotic Stimulation
- ✓ 50 Capsules lasts 12 weeks!

Take one capsule with a large meal four times per week.

Meals with two or more different vegetables give best results.

One bottle of 50 capsules lasts 12 weeks.

NOTE: Program #1 provides probiotic stimulation and eliminates the need for Program #2.

THERAPEUTIC DOSE

ENZALASE DOSE PROGRAMS Dose Program 3

- ✓ For Systemic Health (General health)
- ✓ 50 Capsules lasts 12 weeks!

THREE
MEGA-POTENCY
PROGRAMS FOR
INTESTINAL
HEALTH

Take one capsule on an empty stomach with a full glass of water four times per week.

One bottle of 50 capsules lasts 12 weeks.

NOTE: Programs 1 or 2 do not substitute for this program. This program can be taken simultaneously with programs 1 or 2.

**FOR
SYSTEMIC
HEALTH**

Enzalase[®]
Probiotic Compatible Enzymes

**Get advanced
enzyme activity.**



THERAPEUTIC DOSE



Enzalase for systemic effects

**FOR
SYSTEMIC
HEALTH**

- ✓ Enzalase taken on an empty stomach allows the lipase and proteolytic enzymes to enter the blood stream.
- ✓ Proteolytic enzymes reduce inflammation. The Lipase breaks down lipids that contribute to plaque.
- ✓ One result may be better circulation and systemic health.

**FOR
SYSTEMIC
HEALTH**

COMPARE:

Enzalase® for systemic use

- ✓ Take **one or two Enzalase** capsules daily
- ✓ 50 capsules per bottle (at one daily)
- ✓ **High Lipase** (6,000 units) compliments systemic action
- ✓ ALL PLANT BASED ENZYMES – **100% Vegan**. Doesn't contain pancreatin
- ✓ **Patented alginate delivery** assures enzyme survival in stomach, for maximum absorption
- ✓ Contains **natural emulsifier EnzaStim®** that helps transport enzymes to blood stream
- ✓ **T.I.P. packaging** in nitrogen flushed amber glass bottles assures maximum shelf life
- ✓ Recommended by **Dr. Russell Blaylock** in *Blaylock Wellness Report*
- ✓ \$39.95 MSRP
- ✓ **Made in USA**

Wobenzyme N

(major competitor)

- ✓ Take **6-12** tablets daily
- ✓ 100 tablets/bottle (**lasts 16 days** at 6 daily)
- ✓ **Does not contain High Lipase!**
- ✓ Contains enzymes from **animal extracts**; ie, pancreatin from pig pancreas. Not approved for vegan use
- ✓ Enteric **coated with synthetic polymer**. Enzalase's alginate is natural ingredient from seaweed
- ✓ **No emulsifier**
- ✓ **Plastic bottles** compromise shelf life
- ✓ \$39.95 MSRP
- ✓ **Made in Europe**

THERAPEUTIC DOSE



Enzalase instructions for systemic use

**FOR
SYSTEMIC
HEALTH**

Take one or two capsules daily between meals, on an empty stomach, with a full glass of water. Allow at least 3 hours after eating before taking Enzalase® for systemic use.

- ✓ Enzalase's advanced biochemical composition beats the competition!
- ✓ Contains only plant derived enzymes.
- ✓ High lipase (6,000 FIP Units/capsule) works synergistically with high protease activity.
- ✓ Does not contain any animal extracts such as pancreatin.
- ✓ Contains a natural emulsifier, Enzastim®, for improved enzyme absorption.
- ✓ Acid-Proof formulation protects enzymes from stomach acid and insures deep delivery into small intestine.
- ✓ Packaged in nitrogen flushed, amber glass bottles for maximum stability and shelf life.
- ✓ High potency and delivery provides effective activity from just 1-2 capsules daily.

2+2

Gentle Colon Cleanse

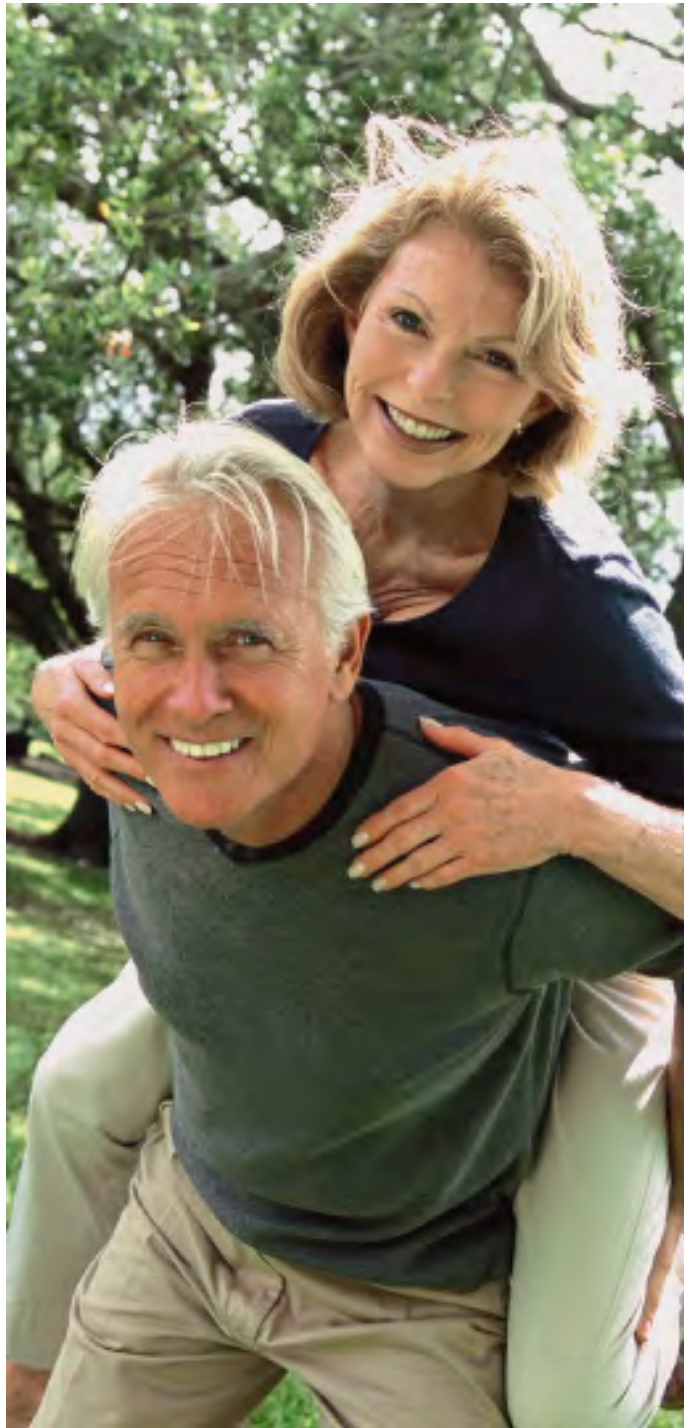




Two capsules of Enzalase[®] and two scoops of TruFiber[®] at bedtime with 8oz water for 10 nights.

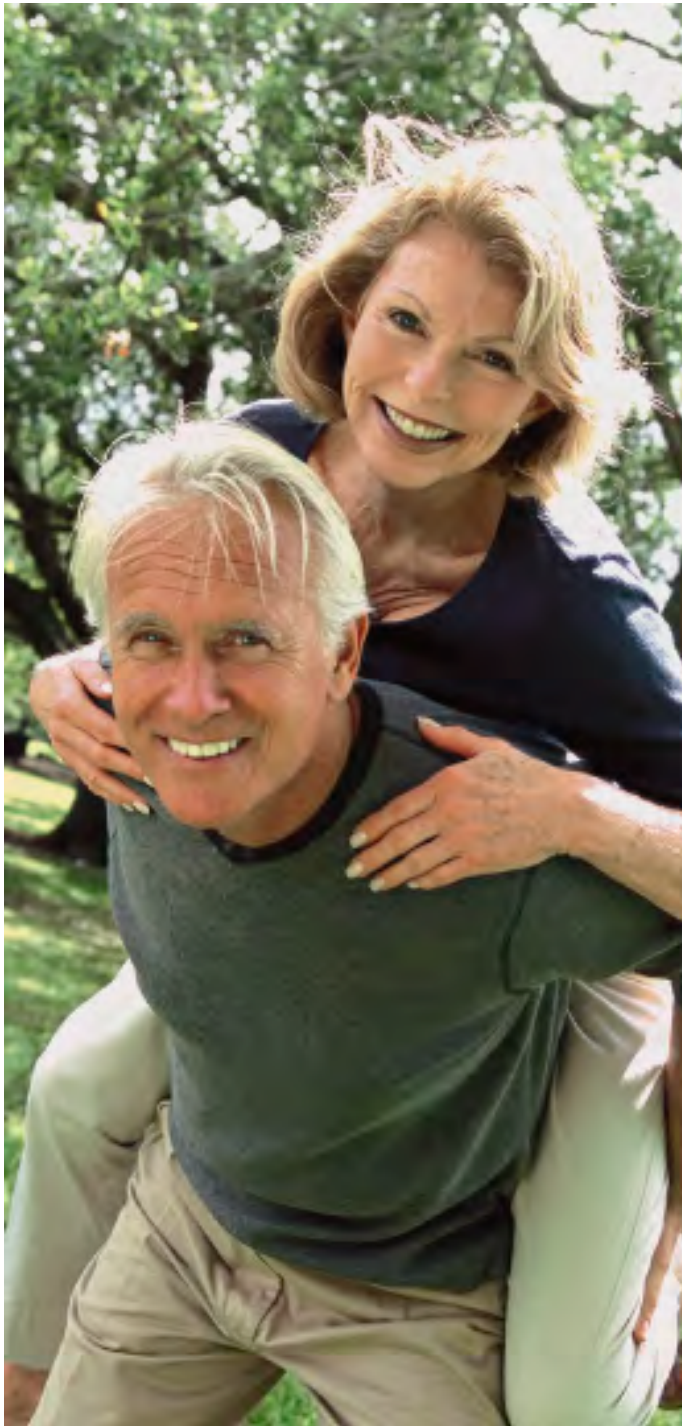
← **Enzalase[®] is synergistic with soluble fiber for a gentle colon cleanse.**

← **Best soluble fiber is TruFiber[®]**



The best way to prepare a G.I. tract for probiotics in a constipated population:

- ✓ **Lipase and cellulase digest the fat/fiber complex that accumulates like spackle in the colon.**



- ✓ Easy on your system—unlike harsh herbal preparations.
- ✓ Gentle-acting; works while you sleep.
- ✓ Preps your GI Tract for probiotics.
- ✓ Easy to take, fiber dissolves clear with no taste or grit.
- ✓ Easy to swallow V-Caps.
- ✓ Fiber can be taken daily after the cleanse.
- ✓ Enzymes help with indigestion and better digestion.



**All Master Supplement
products ship without
refrigeration**

**But please refrigerate
Theralac, TruFlora and
Enzalase on arrival to insure
their efficacy.**



Master Supplements
INCORPORATED



**NOW...Let's Show You How
You Can Use These Products
To Create A Significant New
Revenue Stream For Your
Practice!!!**



USE THESE PRODUCTS TO CREATE A SIGNIFICANT NEW REVENUE STREAM FOR YOUR PRACTICE!!!

- **Givens & Assumptions:**

- 1.) **Theralac Profit to Physician: \$24.00 per bottle; TruFiber Profit to Physician = \$15.00 per bottle; Enzalase Profit to Physician: \$20 per bottle.**
- 2.) **Practice sees 25 patients per day. 8-10 of these patients are taking antibiotics, birth control pills, PPI or showing some GI distress as a result of a poor diet.**
- 3.) **Let's assume that of these 8-10 patients, you will place 5 patients each day or 25 patients per week on Theralac. 60% of these 20 patients or 15 patients per week will purchase TruFiber. Finally, 40% of these patients or 10 patients per week will purchase Enzalase.**

- **This is what you could expect in new revenues to your practice from these Master Supplement products:**

25 patients on Theralac each week x \$24 profit per bottle = \$480 profit per week or \$31,200 per year. Adding TruFiber prebiotic to 60% of these same patients – with a profit of \$15 per bottle will add another \$11,700 in additional dollars per year. Adding Enzalase to 40% of these same patients – with a \$20 profit per bottle – will add \$10,400 in additional revenue...

Resulting in over \$53,000 in new revenues to your practice!!



Thank you....

For More Information, Please Contact:

Jim Skognes – President

Provider Services of America

(770) 390-9183 – Office

(770) 331-0676 – Cell

jskognes@providerservicesofamerica.com

